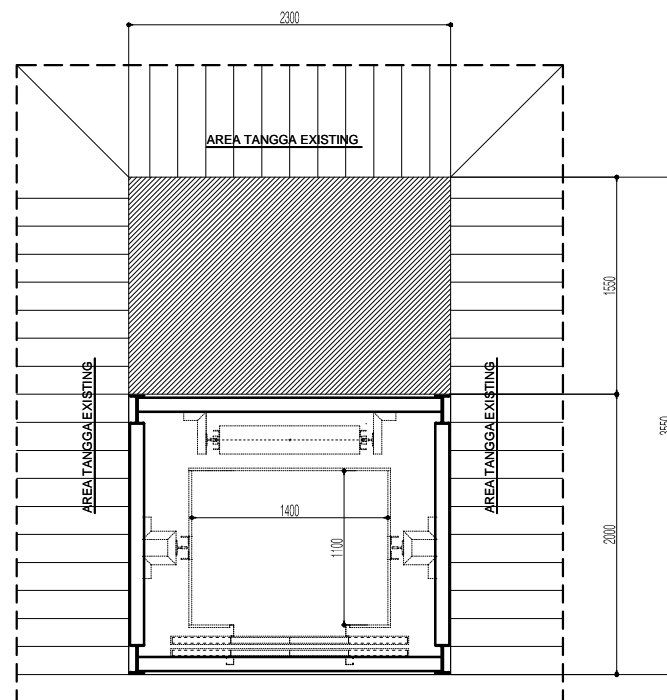
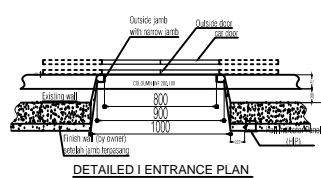


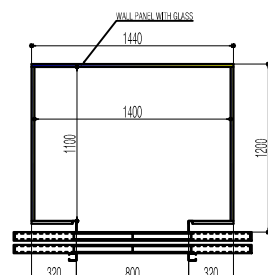
DETAILED SHAFT HOISTWAY & ELEVATOR SPECT...



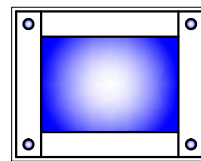
DETAILED SHAFT HOISTWAY & CONSTRUCTION PLANN



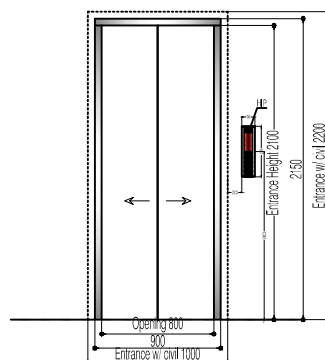
DETAILED I ENTRANCE PLAN



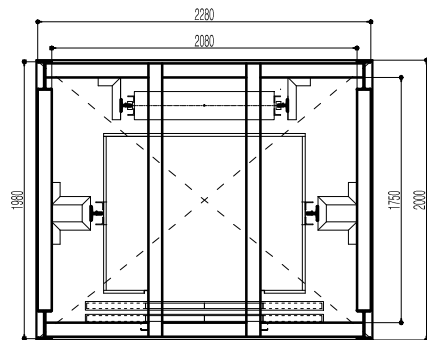
LAY OUT FLOOR & WALL PANEL



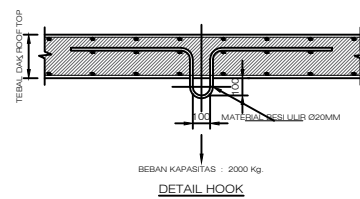
LAY OUT CEILING



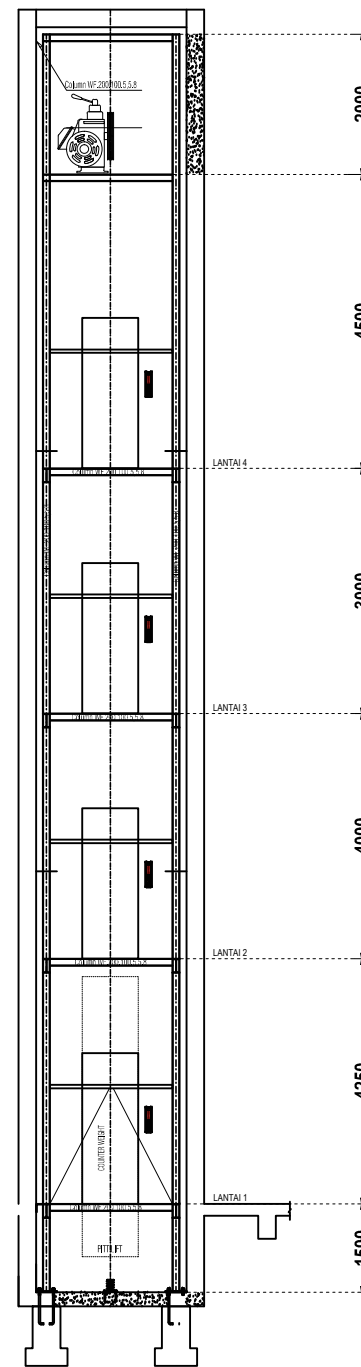
DETAILED III ENTRANCE PLAN (CENTRE OPENING)



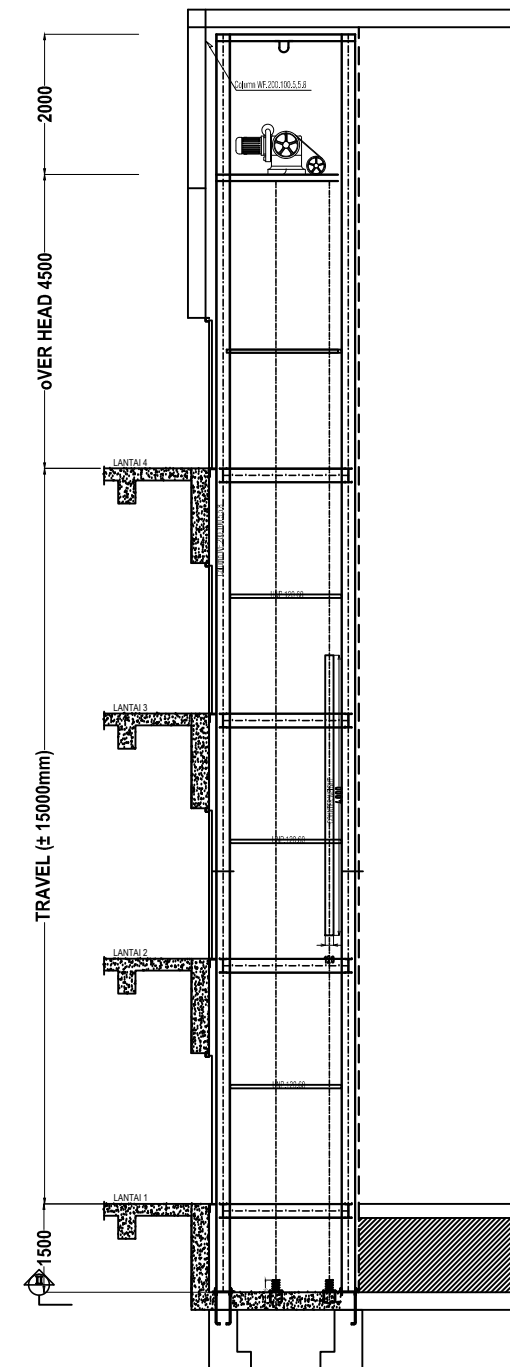
DETAILED SHAFT HOISTWAY & CONSTRUCTION PLANN



DETAIL HOOK



SECTION OF HOISTWAY PLANN I
Scale 1:50



SECTION OF HOISTWAY PLANN II
Scale 1:50

SPEKIFIKASI

ELEVATOR TYPE : PANORAMIC PASSENGER ELEVATOR

LOAD CAPACITY (Kg) : 630 Kg

SPEED : 1 M/S

OPENING MODE : CENTRE OPENNING

DOOR NET SIZE (mm) : 800(w) x 2100(H)

CAR NET SIZE (mm) : 1400(w)x1100(d)x2300(h)

OVERHEIGHT (mm) : 4500 (H) (Recommended)

PITT DEPTH (mm) : 1500 mm

TRAVELLING HEIGHT (mm) : ± 20000 mm

FLOOR / STOP : 4 / 4

MACHINE TYPE : TRACTION MACHINE

MOTOR POWER (Kw) :

RATED CURRENT (A) :

MAIN POWER PUPPLY : 380V AC 50HZ 3P

LIGHT POWER SUPPLY : 220V 50HZ

SHAFT HOISTWAY : 2300(W) X 2000(D)

MACHINE ROOM : 2300(W) X 2000(D) X 2000(H)



PROYEK/ PROJECT

HOTEL SYARIAH
BANDUNG

SHAFT HOISTWAY PASSENGER
ELEVATOR
CAP. 630Kg / 10P / 4 FL

SKALA/ SCALE

TANGGAL/ DATE

PERENCANA/ ARCHITECT

DIGAMBAR/ DRAWN

DIPERIKSA/ CHECKED

CUSTOMER APPROVAL

DISETJUI/ APPROVED

PREPARED

30 JULI 2022

ZULKIFLI

PREPARED